

## Alabama Precipitation Data 1895 - 2007 (Inches)

Year	Jan	Feb	Mar	Apr	May	Jun	Jul	Aug	Sep	Oct	Nov	Dec	Annual Avg	Historic Avg	Departure from Avg
1895	6.41	2.57	6.32	3.56	3.55	5.37	4.34	3.89	1.74	2.03	1.29	3.65	44.72	53.81	-9.09
1896	3.66	5.55	4.33	3.47	3.15	5.17	4.62	1.75	2.1	2.41	3.44	1.61	41.26	53.81	-12.55
1897	3.06	6.26	7.97	3.97	1.38	1.75	4.16	4.17	0.8	1.33	1.71	5.55	42.11	53.81	-11.70
1898	3.51	1.98	2.71	4.2	0.81	3.47	5.28	5.57	4.54	4.24	4.75	3.44	44.5	53.81	-9.31
1899	4.91	5.8	5.51	2.35	1.83	2.71	5.92	2.76	0.8	2.23	2.54	5.58	42.94	53.81	-10.87
1900	2.89	8.07	4.83	8.45	2.39	10.59	4.25	2.18	4.78	5.56	3.25	4.65	61.89	53.81	8.08
1901	4.51	4.04	5.27	5.02	4.63	2.68	2.97	6.28	4.86	1.07	1.6	7.53	50.46	53.81	-3.35
1902	3.32	6.27	7.34	2.2	2.4	1.21	2.18	2.63	5.05	3.69	3.53	5.59	45.41	53.81	-8.40
1903	3.1	10.39	4.83	2.51	5.54	4.72	3.5	2.7	1.77	1.85	1.75	2.93	45.59	53.81	-8.22
1904	3.71	3.88	2.94	2.03	2.69	2.73	4.25	4.18	1.6	0.32	2.47	4.17	34.97	53.81	-18.84
1905	4.56	7.08	3.2	3.41	4.9	4.18	3.95	3.92	3.06	4.5	1.52	6.33	50.61	53.81	-3.20
1906	4.03	2.39	7.7	0.97	4.4	3.27	7.21	2.71	10.03	3.47	2.04	3.96	52.18	53.81	-1.63
1907	1.9	4.75	2.46	6.09	7.1	2.74	4.38	2.58	6.44	1.43	5.24	6.04	51.15	53.81	-2.66
1908	3.76	5.97	3.99	5.68	4.8	2.63	4.18	2.55	2.78	1.78	1.3	4.6	44.02	53.81	-9.79
1909	1.81	7.16	7.43	6.31	6.01	7.53	3.93	2.45	3.36	1.59	1.03	5.08	53.69	53.81	-0.12
1910	3.06	5.15	1.08	3.22	3.52	6.69	6.21	1.98	2.63	3.23	1.77	3.38	41.92	53.81	-11.89
1911	3.67	3.13	2.03	7.33	2.6	3.7	4.92	3.68	2.76	3.14	3.77	7.37	48.1	53.81	-5.71
1912	5.22	4.76	8.16	9.46	3.28	4.9	4.48	4.23	5.6	3.03	1.64	6.29	61.05	53.81	7.24
1913	5.31	5.48	8.15	2.21	2.86	3.39	4.36	1.91	8.28	2.23	1.15	3.23	48.56	53.81	-5.25
1914	1.9	4	2.93	3.63	0.95	2.55	3.63	4.84	5.59	2.9	3.49	4.91	41.32	53.81	-12.49
1915	5.35	4.57	2.7	0.55	5.78	3.52	4.55	3.77	5.28	4.97	2.64	6	49.68	53.81	-4.13
1916	3.45	3.82	2.52	2.97	3.93	3.21	14.55	2.67	2.6	1.75	2.38	4.27	48.12	53.81	-5.69
1917	5.72	5.28	7.83	3.29	2.16	3.08	5.24	4.58	7.65	1.47	1.15	1.69	49.14	53.81	-4.67
1918	6.37	2.28	0.7	7.19	2.29	4.05	3.37	2.65	5.07	8.74	4.28	5.71	52.7	53.81	-1.11
1919	5.06	6.61	6.07	3.29	5.54	4	5.79	5.6	0.92	4.67	3.84	7.04	58.43	53.81	4.62
1920	5.89	3.92	6.08	8.71	4.49	4.32	4.59	5.07	3.94	1.13	2.58	7.53	58.25	53.81	4.44
1921	2.8	4.97	4.11	6.18	1.81	1.75	4.5	3.25	3.25	2.34	3.07	3.31	41.34	53.81	-12.47
1922	6.13	5.83	8.46	3.9	6.11	3.49	3.81	2.43	1.8	2.58	1.6	7.14	53.28	53.81	-0.53
1923	3.47	5.66	5.31	5.67	7.85	3.83	4.55	4.67	1.44	2.67	4.41	5.21	54.74	53.81	0.93
1924	5.79	4.38	2.79	5.28	3.85	5.13	3.08	2.13	4.07	0.37	0.29	6.85	44.01	53.81	-9.80
1925	8.38	3.37	2.5	1.43	2.12	2.16	4.24	1.13	3.23	5.8	3.77	3.48	41.61	53.81	-12.20
1926	7.13	4.22	5.45	2.19	2.73	4.72	5.33	5.13	6.46	2.12	4.16	5.71	55.35	53.81	1.54
1927	0.99	6.15	4.06	2.59	2.33	5.06	3.52	2.63	1.7	2.06	3.11	7.9	42.1	53.81	-11.71
1928	1.36	3.62	5.23	9.33	3.34	9.74	4.46	3.38	3.48	3.37	1.82	2.08	51.21	53.81	-2.60

## Alabama Precipitation Data 1895 - 2007 (Inches)

Year	Jan	Feb	Mar	Apr	May	Jun	Jul	Aug	Sep	Oct	Nov	Dec	Annual Avg	Historic Avg	Departure from Avg	
1929	4.92	8.75	12.85	4.38	5.34	5.02	3.28	1.56	6.98	5.14	8.47	3.59	70.28	53.81	16.47	-166.66
1930	3.86	2.16	4.74	1.39	3.48	1.87	3.46	2.6	7.6	2.74	6.07	2.74	42.71	53.81	-11.10	-177.76
1931	3.22	3.4	3.99	3.39	3.49	1.4	5.95	4.45	1.1	1.74	2.04	9.08	43.25	53.81	-10.56	-188.32
1932	7.12	5.33	4.52	3.23	4.94	4.97	4.73	5.57	4.65	6.49	3.43	8.84	63.82	53.81	10.01	-178.31
1933	3.07	6.17	6.94	6.4	2.46	3	7.15	4.16	2.38	2.02	1.24	3.44	48.43	53.81	-5.38	-183.69
1934	3.63	4.59	6.21	3.62	3.94	5.37	6.84	6.14	1.98	6.61	3.69	3.39	56.01	53.81	2.20	-181.49
1935	2.66	4.31	7.74	5.5	4.6	4.03	4.54	4.98	2.13	1.63	3.22	4.31	49.65	53.81	-4.16	-185.65
1936	12.03	7.34	3.64	6.79	1.99	1.98	6.9	5.87	2.72	2.33	1.8	7.14	60.53	53.81	6.72	-178.93
1937	8.12	4.94	4.54	7.29	4.54	3.71	4.85	5.07	4.27	6.09	3.53	2.62	59.57	53.81	5.76	-173.17
1938	3.31	1.93	6.11	9.48	3.14	4.24	7.98	3.9	1.33	0.35	3.13	2.7	47.6	53.81	-6.21	-179.38
1939	4.71	10	5.24	3.55	5.43	6.34	4.75	11.12	4.14	0.35	0.83	3.36	59.82	53.81	6.01	-173.37
1940	4.34	6.87	5.21	3.69	3.35	6.91	8.82	3.14	1.31	1.43	3.47	6.56	55.1	53.81	1.29	-172.08
1941	2.7	2.84	4.56	2.75	0.7	4.44	8.17	5.79	3.01	2.06	2.43	7.75	47.2	53.81	-6.61	-178.69
1942	3.53	4.84	7.45	1.93	3.32	6.17	4.96	6.87	4.35	1.98	1.72	7.78	54.9	53.81	1.09	-177.6
1943	4.52	2.26	10.29	3.62	3.72	3.69	4.69	3.68	4.18	0.86	3.6	3.72	48.83	53.81	-4.98	-182.58
1944	3.64	7.05	11.02	9.68	2.88	2.7	4.37	6.46	4.96	0.58	3.76	3.67	60.77	53.81	6.96	-175.62
1945	4.09	6.98	4.5	8.15	3.4	3.48	6.35	3.42	3.61	3.66	3.45	6.72	57.81	53.81	4.00	-171.62
1946	8.45	6.48	7.97	3	7.67	5.93	6.88	4.93	6.32	1.45	4.81	2.65	66.54	53.81	12.73	-158.89
1947	9.66	1.9	7.61	7.04	5.87	4.78	3.31	3.86	2.68	1.72	7.9	4.93	61.26	53.81	7.45	-151.44
1948	4.54	6.04	9.99	3.74	3.15	3.73	7	3.98	4.45	1.66	15.19	4.57	68.04	53.81	14.23	-137.21
1949	6.5	6.03	6.05	5.87	3.98	6	6.7	4.64	3.2	3.12	0.79	3.97	56.85	53.81	3.04	-134.17
1950	4.37	4.08	6.61	3.73	3.97	3.44	9.11	5.22	4.08	1.69	1.61	4.02	51.93	53.81	-1.88	-136.05
1951	3.84	3	8.92	5.06	1.52	4.62	4.43	2.44	5.69	1.73	3.68	7.33	52.26	53.81	-1.55	-137.6
1952	3.85	4.36	6.57	2.99	5.45	2.22	2.29	6.59	3.24	1.29	2.51	5.98	47.34	53.81	-6.47	-144.07
1953	5.36	7.33	3.58	7.79	4.17	4.05	5.94	2.43	5.03	0.6	2.71	10.8	59.79	53.81	5.98	-138.09
1954	3.78	3.16	3.66	3.38	2.1	2.07	3.67	1.78	1.08	1.3	2.96	4.64	33.58	53.81	-20.23	-158.32
1955	4.43	5.32	3.07	7.51	5.74	3.06	7.19	3.14	1.09	2.4	3.14	1.92	48.01	53.81	-5.80	-164.12
1956	2.62	7.75	6.95	4.55	2.58	4.16	5.57	2.82	5.14	3.76	1.66	6.03	53.59	53.81	-0.22	-164.34
1957	4.49	3.54	4.38	6.98	5.06	6.09	2.91	2.21	8.84	2.32	8.07	3.57	58.46	53.81	4.65	-159.69
1958	3.3	4.31	5.71	5.24	2.73	5.02	8.5	3	5.19	1.46	3	2.12	49.58	53.81	-4.23	-163.92
1959	4.62	4.82	6.08	4.11	6.02	3.99	4.55	3.4	5.35	7.03	2.46	3.38	55.81	53.81	2.00	-161.92
1960	5.9	4.41	7.02	3.96	3.38	3.06	4.35	5.78	5.42	3.37	2.16	2.76	51.57	53.81	-2.24	-164.16
1961	3.28	12.67	9.22	4.9	3.21	6.82	4.91	5.12	2.72	0.94	4.36	12.33	70.48	53.81	16.67	-147.49
1962	7.19	5	5.74	6.22	1.12	5.12	4.31	2.7	3.44	2.68	4.87	3.08	51.47	53.81	-2.34	-149.83

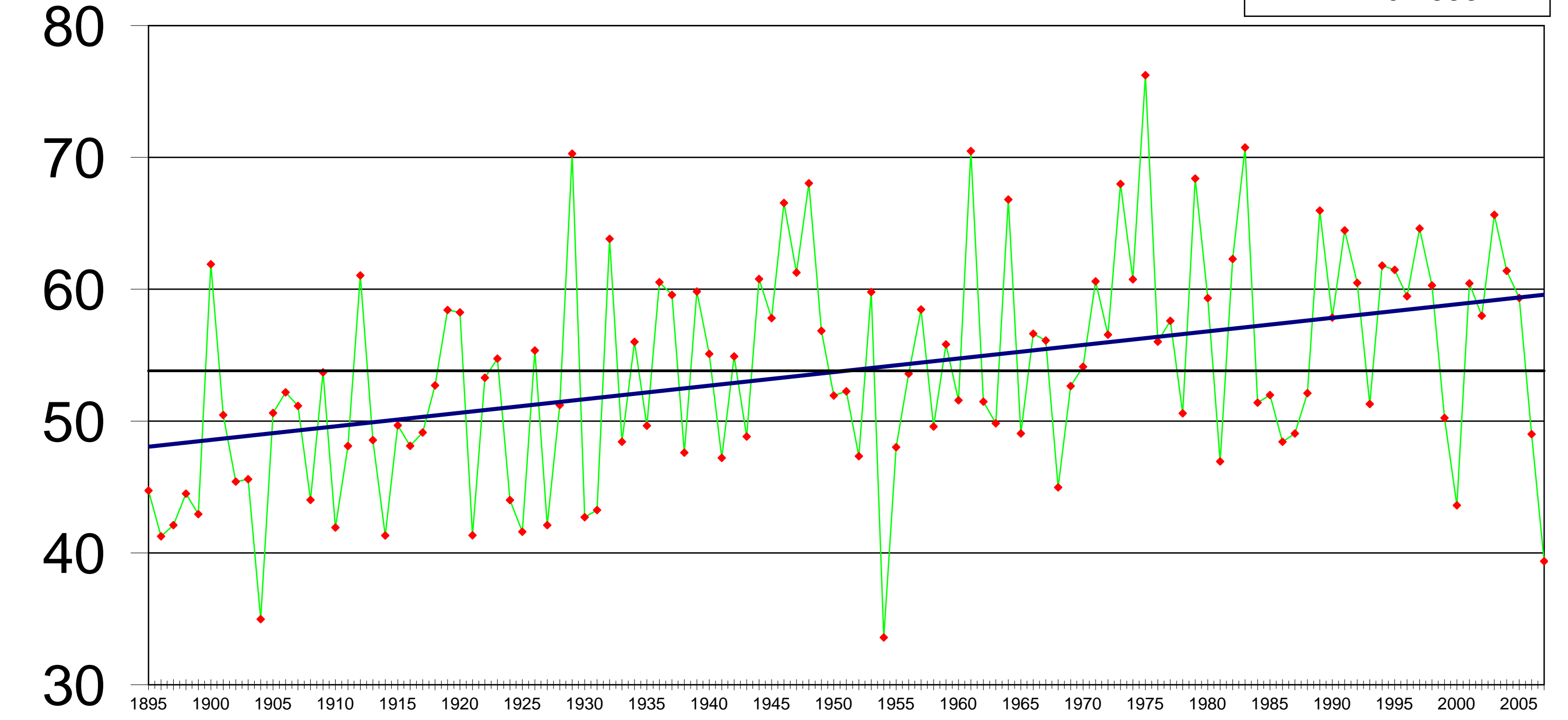
## Alabama Precipitation Data 1895 - 2007 (Inches)

Year	Jan	Feb	Mar	Apr	May	Jun	Jul	Aug	Sep	Oct	Nov	Dec	Annual Avg	Historic Avg	Departure from Avg	
1963	6.45	3.34	5.31	4.1	3.38	5.94	5.9	2.81	3.24	0.04	4.35	4.97	49.83	53.81	-3.98	-153.81
1964	6.86	4.56	8.08	11.65	2.62	3.48	7.21	4.48	3.76	4.92	3.75	5.43	66.8	53.81	12.99	-140.82
1965	4.3	6.26	6.8	2.52	1.18	5.56	5.92	4.41	4.17	2.9	1.79	3.25	49.06	53.81	-4.75	-145.57
1966	5.92	8.72	4.06	4.27	4.94	2.56	4.02	5.02	4.49	4.22	3.57	4.83	56.62	53.81	2.81	-142.76
1967	3.81	4.77	1.95	2.25	5.67	4.28	7.08	6.63	3.62	4.02	3.78	8.25	56.11	53.81	2.30	-140.46
1968	4.62	1.93	3.53	4.96	4.14	1.69	5.2	3.71	2.74	1.33	4.35	6.77	44.97	53.81	-8.84	-149.3
1969	3.64	4.23	5.08	5.28	6.2	2.31	5.48	4.96	4.53	2.61	1.85	6.49	52.66	53.81	-1.15	-150.45
1970	3.29	3.79	7.62	4.64	3.29	5.96	4.06	6.28	1.87	6.25	2.23	4.84	54.12	53.81	0.31	-150.14
1971	4.19	7.93	8.93	4.03	4.02	3.62	7.6	4.06	4.9	1.18	2.5	7.63	60.59	53.81	6.78	-143.36
1972	8.69	3.56	6.01	2.44	4.46	4.61	4.6	2.33	3.76	2.98	4.67	8.44	56.55	53.81	2.74	-140.62
1973	6	4.06	11.8	7.06	6.92	5.42	5.48	3.67	3.89	1.84	4.98	6.87	67.99	53.81	14.18	-126.44
1974	8.13	5.33	3.9	5.93	5.19	3.89	4.5	6.06	6.68	1.26	3.92	5.96	60.75	53.81	6.94	-119.5
1975	6.67	7.34	8.69	7.02	5.39	5.3	8.88	5.48	6.74	6.37	3.54	4.81	76.23	53.81	22.42	-97.08
1976	4.55	2.63	10.59	1.63	8.12	4.4	4.48	3.15	3.68	3.64	4.44	4.71	56.02	53.81	2.21	-94.87
1977	5.07	3.67	9.93	4.17	2.12	2.38	5.12	4.34	6.85	4.45	6.23	3.27	57.6	53.81	3.79	-91.08
1978	7.27	2.01	4.02	3.86	8.62	5.2	4.46	4.09	2.07	0.44	3.28	5.27	50.59	53.81	-3.22	-94.3
1979	7.65	6.76	6.71	10.99	4.44	2.64	7.77	4.03	7.29	1.59	5.96	2.56	68.39	53.81	14.58	-79.72
1980	5.51	2.45	14.03	7.7	7.19	3.35	3.07	2.51	5.26	3.85	3.24	1.17	59.33	53.81	5.52	-74.2
1981	1.39	6.79	5.89	3.1	4.08	3.37	3.9	4.97	2.14	3.12	1.81	6.38	46.94	53.81	-6.87	-81.07
1982	6.68	7.81	3.03	7.49	3.11	4.92	6.59	3.98	2.09	2.66	5.74	8.19	62.29	53.81	8.48	-72.59
1983	4.43	7.73	7.87	9.35	6.35	6.13	2.06	2.87	4.69	2.38	7.46	9.43	70.75	53.81	16.94	-55.65
1984	4.21	4.05	5.02	5.2	6.19	2.52	5.86	5.84	0.66	5.19	3.83	2.83	51.4	53.81	-2.41	-58.06
1985	4.05	6.43	2.55	2.96	4.3	3.91	7.27	4.59	3.11	6.02	2.99	3.79	51.97	53.81	-1.84	-59.9
1986	2.13	3.83	4.61	0.71	5.13	2.67	4.04	4.45	4	4.19	9.07	3.6	48.43	53.81	-5.38	-65.28
1987	6.24	7.4	5	0.94	4.61	6.02	3.29	3.83	2.94	0.56	4.16	4.07	49.06	53.81	-4.75	-70.03
1988	5.5	3.84	4.03	4.1	1.73	1.26	6.96	3.65	9.24	3.25	5.57	2.98	52.11	53.81	-1.70	-71.73
1989	4.49	4.22	6.62	4.46	4.74	11.13	7.77	2.52	4.79	3.08	6.32	5.83	65.97	53.81	12.16	-59.57
1990	8.46	8.69	9.26	3.55	5.12	2.97	3.85	1.95	1.87	2.7	2.96	6.47	57.85	53.81	4.04	-55.53
1991	7.4	5.2	7.27	6.95	10.01	5.02	4.59	4.03	3.23	0.94	4.48	5.34	64.46	53.81	10.65	-44.88
1992	6.26	6.11	4.01	2.92	1.97	5.27	6.37	6.04	3.56	2.49	9.71	5.77	60.48	53.81	6.67	-38.21
1993	6.29	3.8	6.69	3.22	3.74	3.42	3.22	4.83	4.2	3.68	3.86	4.34	51.29	53.81	-2.52	-40.73
1994	5.31	5.16	7.38	4.46	3.26	7.59	9.87	2.91	3.58	4.93	3.61	3.73	61.79	53.81	7.98	-32.75
1995	5.03	6.08	5.65	5.36	3.56	3.36	3.96	4.84	3.21	9.4	5.9	5.12	61.47	53.81	7.66	-25.09
1996	7.54	4.16	8.52	4.89	2.63	3.53	6.95	4.93	5.9	2.25	3.46	4.71	59.47	53.81	5.66	-19.43

Alabama Precipitation Data 1895 - 2007 (Inches)															
Year	Jan	Feb	Mar	Apr	May	Jun	Jul	Aug	Sep	Oct	Nov	Dec	Annual Avg	Historic Avg	Departure from Avg
1997	6.62	6.31	3.88	6.07	5.66	8.11	5.97	2.98	3.22	4.94	5.95	4.9	64.61	53.81	10.80
1998	8.51	7.52	6.35	5.29	2.35	3.11	6.21	3.36	8.51	1.46	3.38	4.24	60.29	53.81	6.48
1999	8.16	2.45	5.74	2.59	4.21	8.63	4.86	2.15	2.05	3.32	2.66	3.42	50.24	53.81	-3.57
2000	4.95	1.98	5.39	4.77	1.44	3.82	2.21	2.45	3.56	0.74	7.93	4.37	43.61	53.81	-10.20
2001	4.81	4.12	10.39	4.09	4.22	7.2	4.22	5.72	4.7	3.34	3.5	4.13	60.44	53.81	6.63
2002	5.04	3.03	5.75	2.31	4.4	3.74	5.61	3.36	7.61	5.37	5.08	6.69	57.99	53.81	4.18
2003	2.34	6.83	4.77	6.41	9.07	8.07	8.42	6	3.78	1.62	4.89	3.44	65.64	53.81	11.83
2004	3.41	7.23	2.23	3.34	4.12	7.5	4.6	4.64	6.94	3.9	8.54	4.94	61.39	53.81	7.58
2005	2.9	5.04	6.13	8	3.02	6.24	9.76	6.39	3.51	0.61	3.73	4.01	59.34	53.81	5.53
2006	5.27	5.02	2.99	3.14	4.49	2.03	3.62	4.18	3.64	5.1	5.1	4.38	49	53.81	-4.81
2007	4.53	2.78	1.58	4.06	0.87	2.92	5.22	2.99	3.32	4.09	2.85	4.16	39.37	53.81	-14.44
<b>Average</b>	<b>4.89</b>	<b>5.10</b>	<b>5.82</b>	<b>4.72</b>	<b>4.02</b>	<b>4.34</b>	<b>5.29</b>	<b>4.01</b>	<b>4.01</b>	<b>2.88</b>	<b>3.71</b>	<b>5.03</b>	<b>53.81</b>		

# Average Rainfall (State Level) 1895-2007

$$y = 0.1029x + 47.948$$
$$R^2 = 0.1655$$



Year



